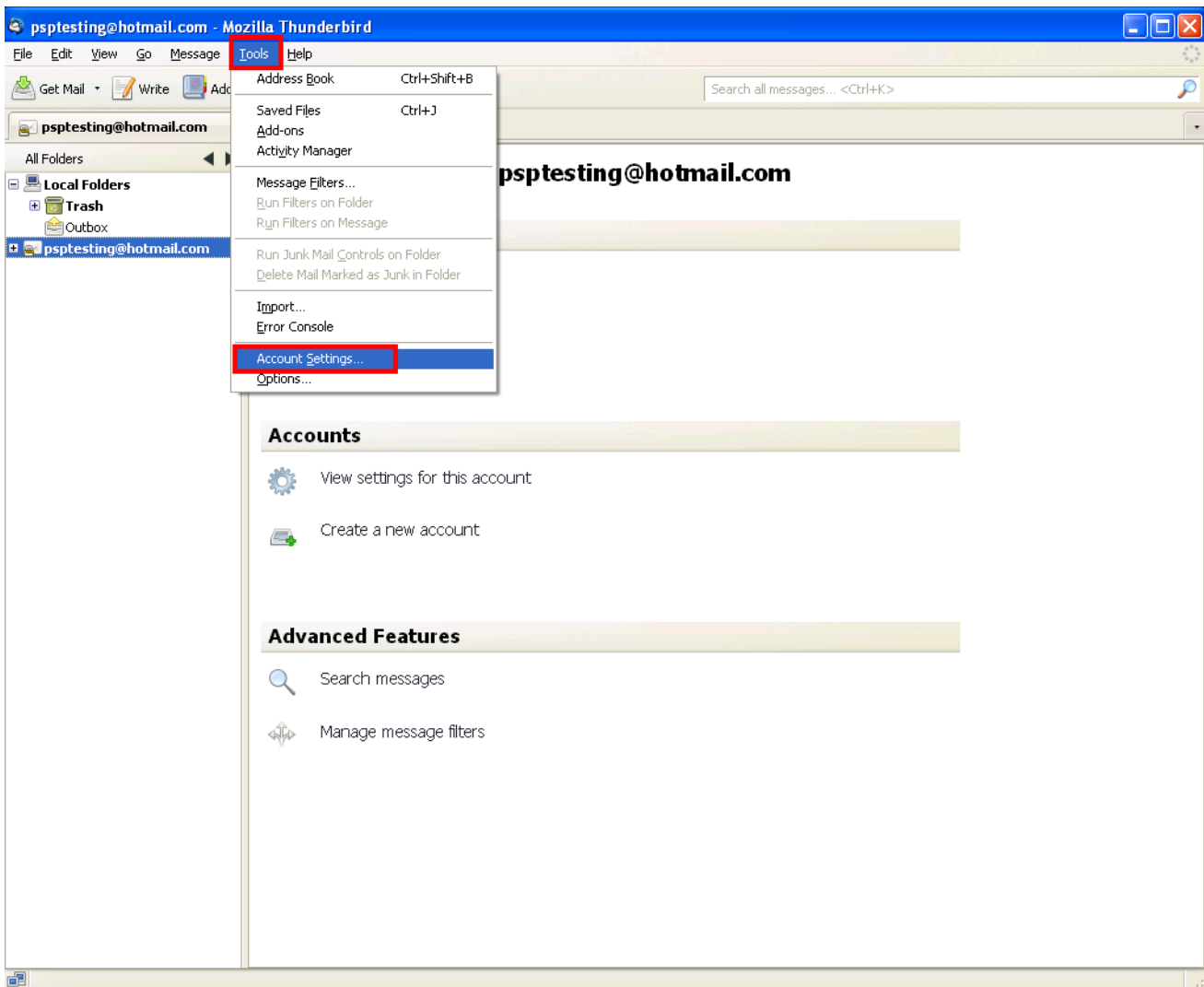


How to set up your IMAP/POP e-mail address with Thunderbird 3.0 and up

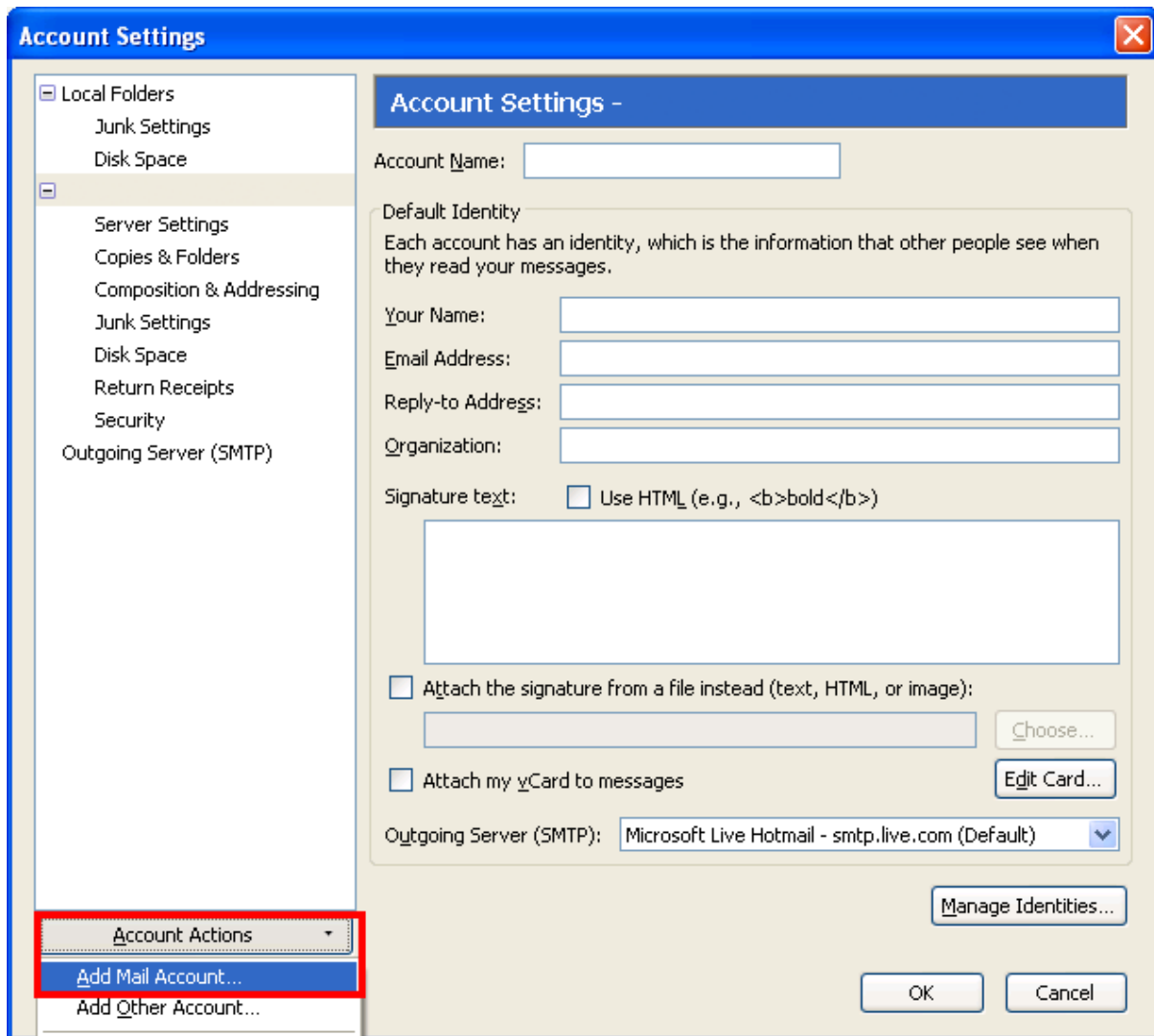
The following instructions will configure Thunderbird as an IMAP client. This configuration will require your:

- Username.....** This is the same as your e-mail address (ex. example@pspinc.com)
- Password.....** The same password as your POP account
- Incoming Server.....** IMAP: imap.dreamersi.net
- Outgoing Server (SMTP)..** smtp.dreamersi.net

1. Open up Thunderbird and click Tools → Account Settings.

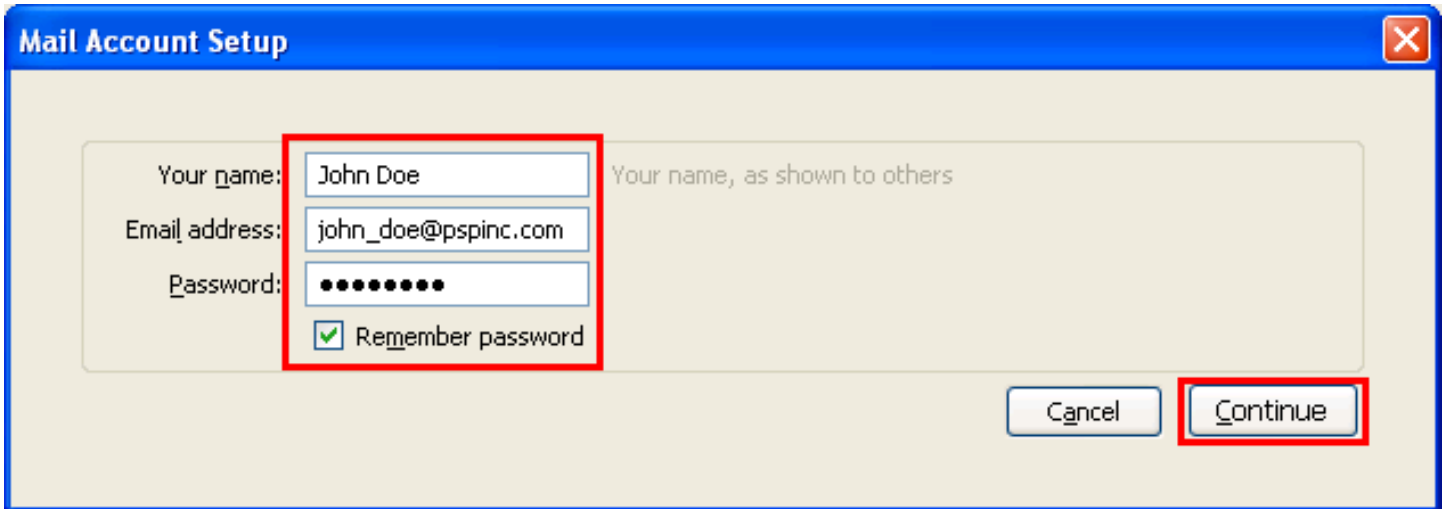


2. Click Account Actions → Add Mail Account



**3. Enter the following information (This is just an example)
When you are done, click Continue.**

Your Name..... John Doe
E-mail Address..... john_doe@pspinc.com
Password..... The same password as your account



The image shows a 'Mail Account Setup' dialog box with a blue title bar and a close button in the top right corner. The dialog contains three input fields: 'Your name:' with the value 'John Doe', 'Email address:' with the value 'john_doe@pspinc.com', and 'Password:' with a masked password of ten dots. Below the password field is a checked checkbox labeled 'Remember password'. To the right of the input fields is the text 'Your name, as shown to others'. At the bottom right of the dialog are two buttons: 'Cancel' and 'Continue'. A red rectangular box highlights the input fields and the 'Remember password' checkbox. Another red rectangular box highlights the 'Continue' button.

Mail Account Setup

Your name: John Doe Your name, as shown to others

Email address: john_doe@pspinc.com

Password: ●●●●●●●●●●

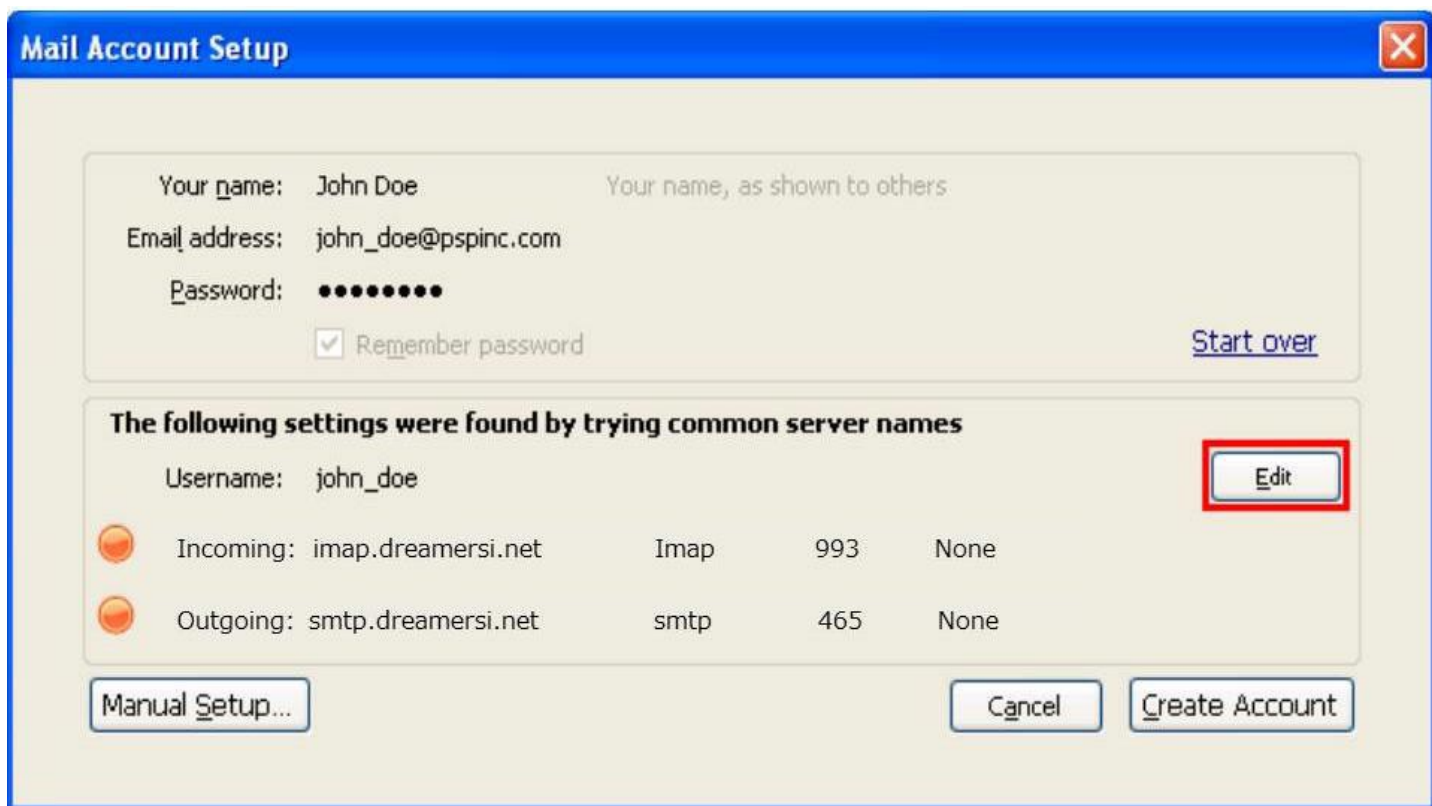
Remember password

Cancel Continue

4. Check your settings and make sure they match:

Click on Edit if they do not match and change it to the appropriate setting and then click on Re-rest Configuration when you are done and then Create Account.

Your Name..... John Doe
E-mail Address..... john_doe@pspinc.com
Password..... The same password as your account
User Name..... john_doe@pspinc.com
Incoming mail server..... imap. **dreamersi.net** (IMAP-SSL, 993)
Outgoing mail server (SMTP). smtp. **dreamersi.net** (SMTP-SSL, 465)

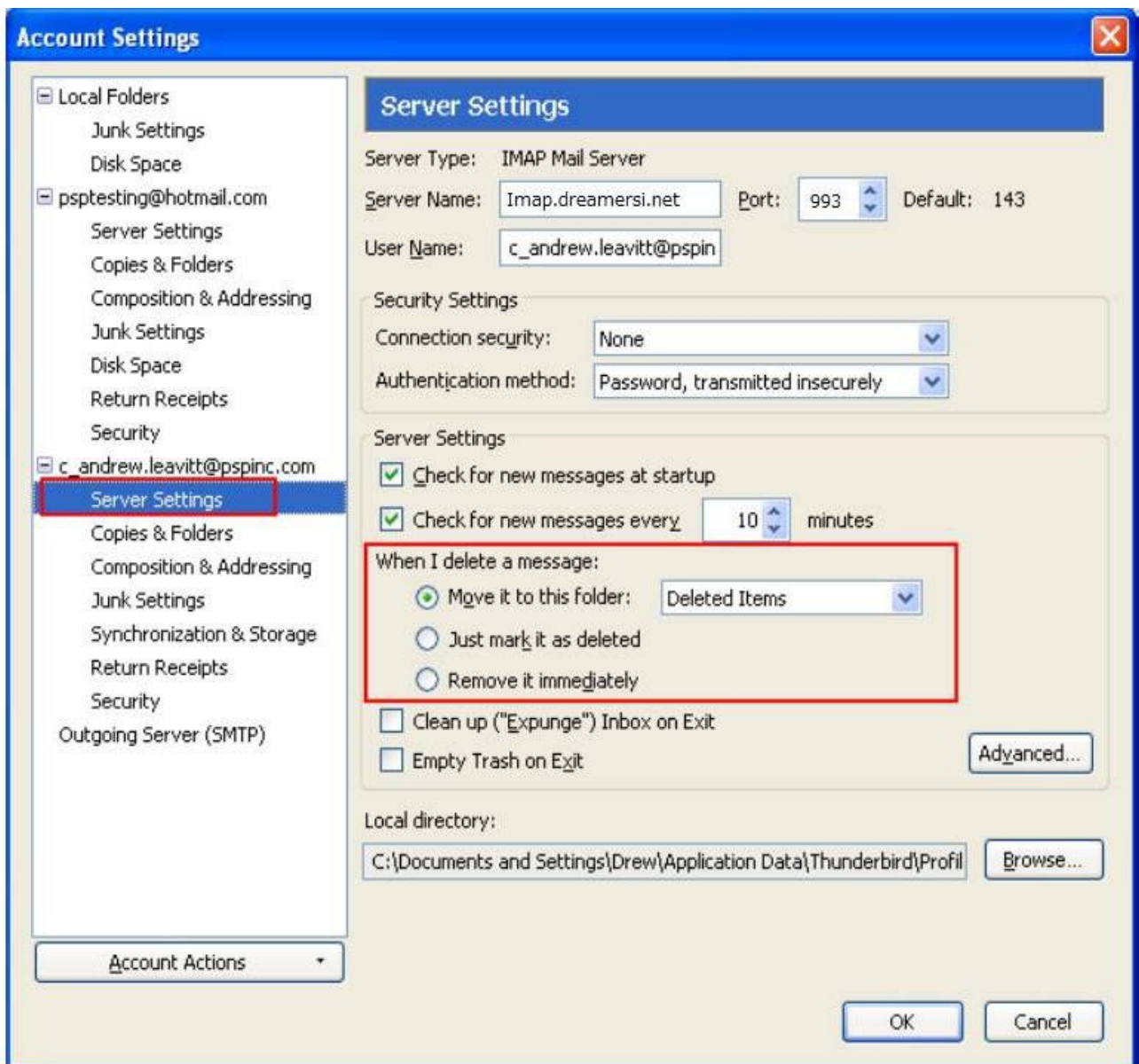


5. Click Next and your account should be set.

After the switch (Only for IMAP):

Deleting Items

You can choose to select where you're deleted items will be stored by going to Tools → Account Settings and select Server Settings under your mail account. Select a folder where you would like to store your deleted items (It will also sync with the server), and you can choose to have all deleted items to be permanently purged by selecting "Empty Trash on Exit" or "Clean up (Expunge) Inbox on Exit". It is completely optional.



Configure "Sent Items" folder to sync to server

If you use multiple accounts and would like all "Sent Items" to be in one organized folder, click Tools → Account Settings and under your e-mail account, click "Copies & Folders". Select "Other" under "When sending messages, automatically:" Then click on your e-mail account and then "Sent Items". All sent IMAP mail will be stored in the "Sent Items" folder.

